



Forest Service  
U.S. Department of Agriculture

Lincoln National Forest

## Forest Service News Release

Media Contact: Amanda Fry  
575-270-2726, [amanda.fry@usda.gov](mailto:amanda.fry@usda.gov)  
[www.fs.usda.gov/lincoln](http://www.fs.usda.gov/lincoln)

### Blue Front Fire Morning Update, October 30, 2024

**Start Date / Time:** October 28, 2024

**Cause:** Unknown

**Size:** 316 acres

**Location:** 4 miles west of Alto, 9 miles northwest of Ruidoso, located in the Blue 2 wildfire footprint in the White Mountain Wilderness.

**Resources:** Smokey Bear Hotshot Module and Sacramento Hotshot Module, Engine 612 (Type 6), Engine 311 (Type 3), Type 1 helicopter, incoming Type 3 crews and resources arriving

**Types of vegetation in the area (aka fuels):** Grass, shrubs, dead/down fuels

**Containment:** 0%

**Strategy:** Full Suppression

**Road Closures:** None

**Smoke:** Light

**Update:** Yesterday, high wind speeds and gusts, along with warmer temperatures resulted in fire spread through grass and dead/down fuels throughout the wildfire footprint. Aviation assets were grounded due to high winds. Crews worked on the ground to establish containment lines, remaining overnight.

Today, more resources for a Type 3 organization will continue to arrive on-scene and begin work in the area. Crews will focus on an 8-acre spot that crossed the South Fork Trail, and the South Fork Drainage Area. Air support will continue to be utilized as conditions allow.

**Weather:** Overnight, high winds continued, with minimal moisture. Today and through the rest of the week, unseasonably warm temperatures and high wind speeds will be a factor in fire growth and ability to safely engage both from the ground and air. Minimal-to-no precipitation is anticipated.

**Evacuations:** None at this time. Homes in the Bonito Lake area are in a 'ready' status from the Lincoln County Emergency Management. 'Ready' status means that residents should be prepared to evacuate. Please pay close attention to emergency announcements. You can sign up for emergency text notifications from Lincoln County at <https://www.onsolve.com/landing/sign-up-for-coded-emergency-alerts/>.

**More Information:**

Facebook: [www.facebook.com/LincolnNationalForest](https://www.facebook.com/LincolnNationalForest)

NM Fire Info: [www.NMFireInfo.com](http://www.NMFireInfo.com)

InciWeb: <https://inciweb.wildfire.gov/incident-information/nmlnf-blue-front-fire>

###

USDA is an equal opportunity provider, employer and lender

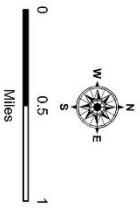
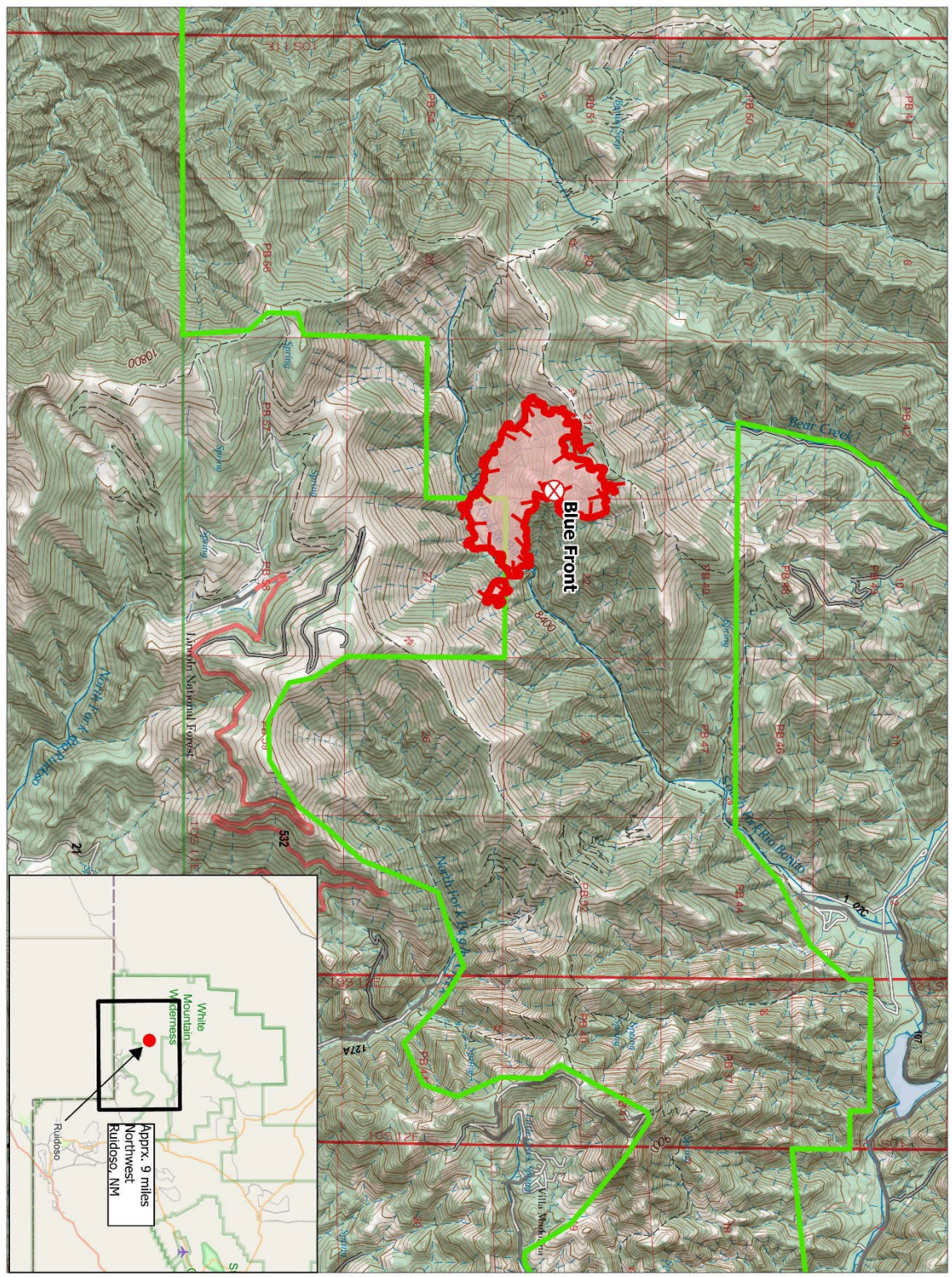


# Public Information

Blue Front  
NM-LNF-000552  
10/30/2024

376 acres at 2320 hrs on 10/29/24

-  Fire Origin
-  Uncontained
-  Wildfire Daily Fire
-  Perimeter
-  White Mountain Wilderness



1372500 | 10020204 esd  
North American 1983 Datum, Laidong GCR